

Student mobile phones in government schools policy

Katherine High School

Student mobile phones in government schools policy

Policy

Student mobile phones are not permitted to be used in Northern Territory Government schools and are to be off and away all day. Exemptions apply for teacher directed educational purposes or for medical reasons.

Katherine High School respects the right of parents who wish to provide their child with a mobile phone. This policy details the conditions under which mobile phones are permitted at Katherine High School.

This policy applies to mobile phones, smart watches and all other devices that allow electronically based distractions. Smart watches will need to be switched to flight mode while students are in school.

Conditions of use

Students are not permitted to have mobile phones on during the school day. Mobile phones must be switched off and stored in a Yondr pouch should the students wish to keep the phone in their possession. Smart watches must be placed on flight mode so phone calls and messages cannot be sent or received during the school day.

Mobile phones owned by students at Katherine High School are considered valuable items and are brought to school at the student's or parent/guardian's risk.

Please note that Katherine High School does not have accident insurance for accidental property damage or theft of personal items. Students and their parents/guardians are encouraged to obtain appropriate insurance for personal items.

The use of mobile phones at Katherine High School is not permitted from the time students enter the school grounds to the conclusion of the school day, unless under the instruction of a teacher or staff member. Student mobile phones must be off and away all day and stored securely in an assigned Yondr pouch which will be provided at the beginning of each day.

As students arrive to school, they will:

- 1) Turn their phone off;
- 2) Place their phone inside their pouch and secure it in front of school staff;
- 3) Store their pouch in their pocket or backpack for the day.

At the end of the day, students will open their pouch, remove their phone and put their pouch in designated Yondr storage facility.

Students arriving late or leaving early will pouch/unpouch their phones at Student Services.

Exemptions

It is acknowledged that technology can be a powerful educational tool when used responsibly. Many teachers and students in Katherine High School use devices in ways that support educational outcomes, including accessing information and resources, taking photos or videos of learning activities, playing educational games, and collaborating with other students, however during school, only laptops or iPads can be used for educational purposes. Students may be granted permission to use their mobile phones from a teacher while on excursions.

For some students, mobile phones and apps are critical for monitoring their health condition. As such, students may be granted an exemption to use their mobile phone and smart watch during the school day to monitor a health condition as part of a school approved documented health care plan.

Where a student has been granted an exemption, the mobile phone can be used by the student; however, its use will be monitored by school staff.

Communication

All communication between parents/guardians and students, during school hours, is to occur via the school office on (08) 8973 8200.

Katherine High School has duty of care for all students when they are attending the school. In emergencies, where students need to get in contact with parents/guardians, students are to notify the appropriate school staff. If parents/guardians need to contact a student, they are asked to contact the school office directly.

Non-compliance of this policy

Students who use their mobile phones inappropriately at Katherine High School may be issued with consequences consistent with our school's Behaviour Management System (Appendix A), Positive Behaviour in Schools Policy and Code of Conduct.

At Katherine High School inappropriate use of mobile phones is described as any use during school hours unless an exemption has been granted.

Breaches of this policy will be managed in accordance with the school's Behaviour Management System (Appendix A).

Students who do not comply with this policy will have their mobile phone confiscated and held at the office. The student will need to collect their mobile phone at the end of the school day.

In the case of repeated inappropriate mobile phone usage by a student, the mobile phone will be confiscated and held at the office. The parent/guardian will be informed and requested to collect the mobile phone.

Further action such as suspension, in accordance with Katherine High School Behaviour Management System, may be a result of repeated breaches and/or depending on the circumstances of the breach.

If a student damages their Yondr pouch, the Duty Officer will collect the phone and pouch and the student may be liable for a \$50 replacement fee. See Appendix B for examples of damage.

Appendix A





BEHAVIOUR MANAGEMENT SYSTEM



CLASSROOM TEACHER *Responses to Level 3 behaviours*

3rd Verbal Warning
RTC questions

If behaviour continues
refer to RTC

Referral to RTC
(Compass entry)

1st Referral
Class Teacher to call parent

3rd Referral
Year Level Coordinator to call parent

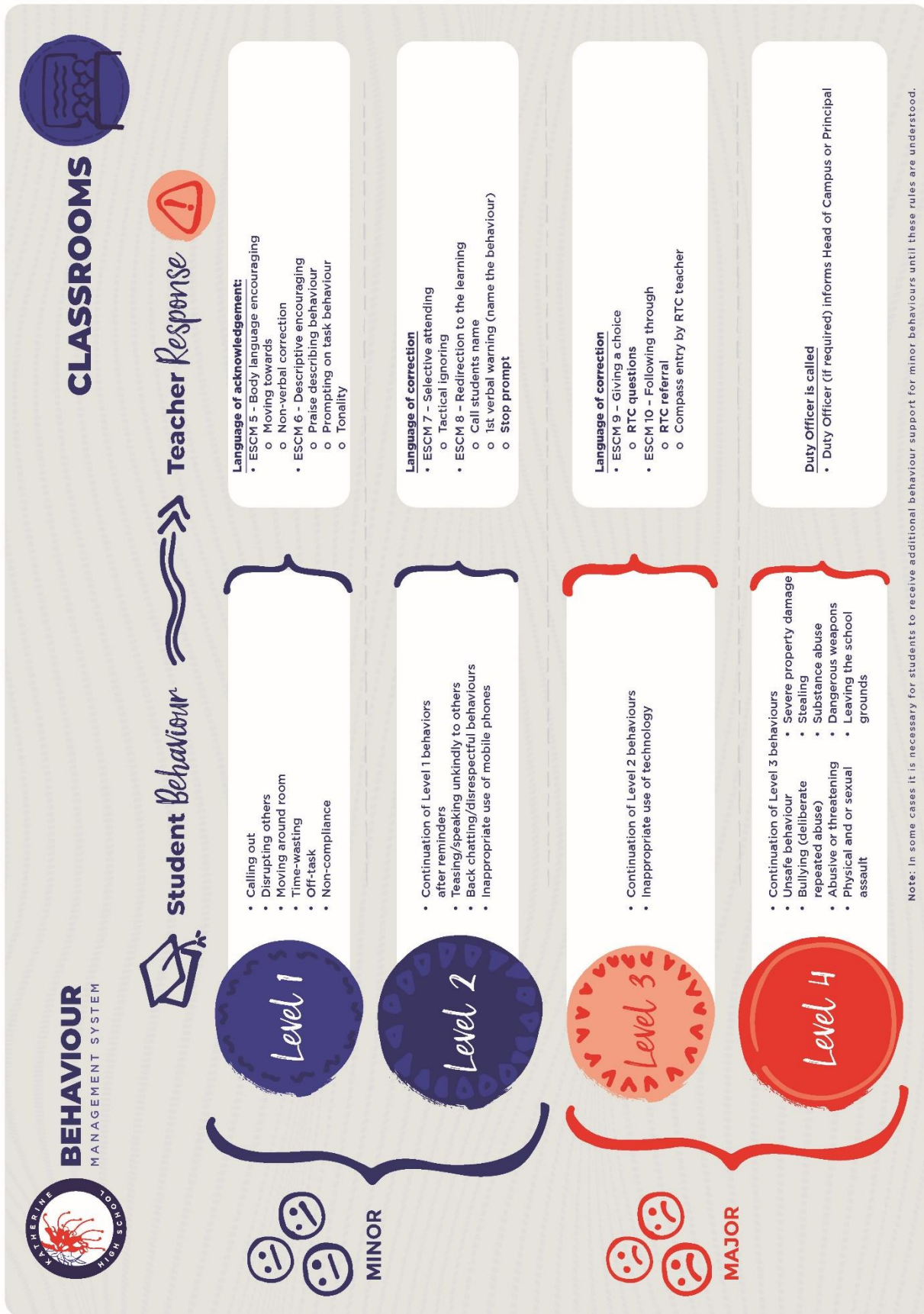
5th Referral
Referral to Assistant Principal for Behaviour and Wellbeing. Parent meeting called.
Sanction at discretion of the Assistant Principal for Behaviour and Wellbeing.

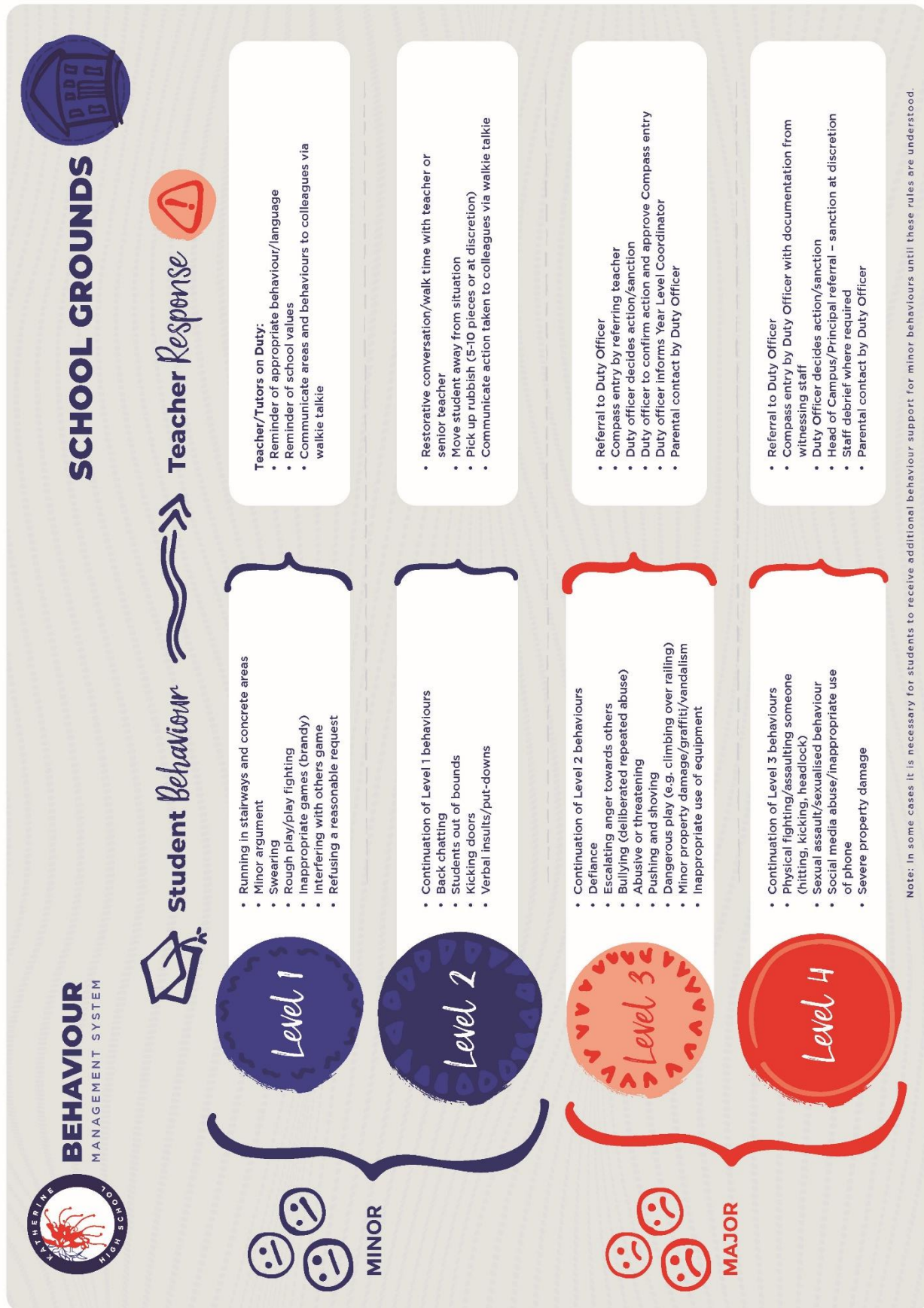
CLASSROOM *Responses to Level 4 behaviours*

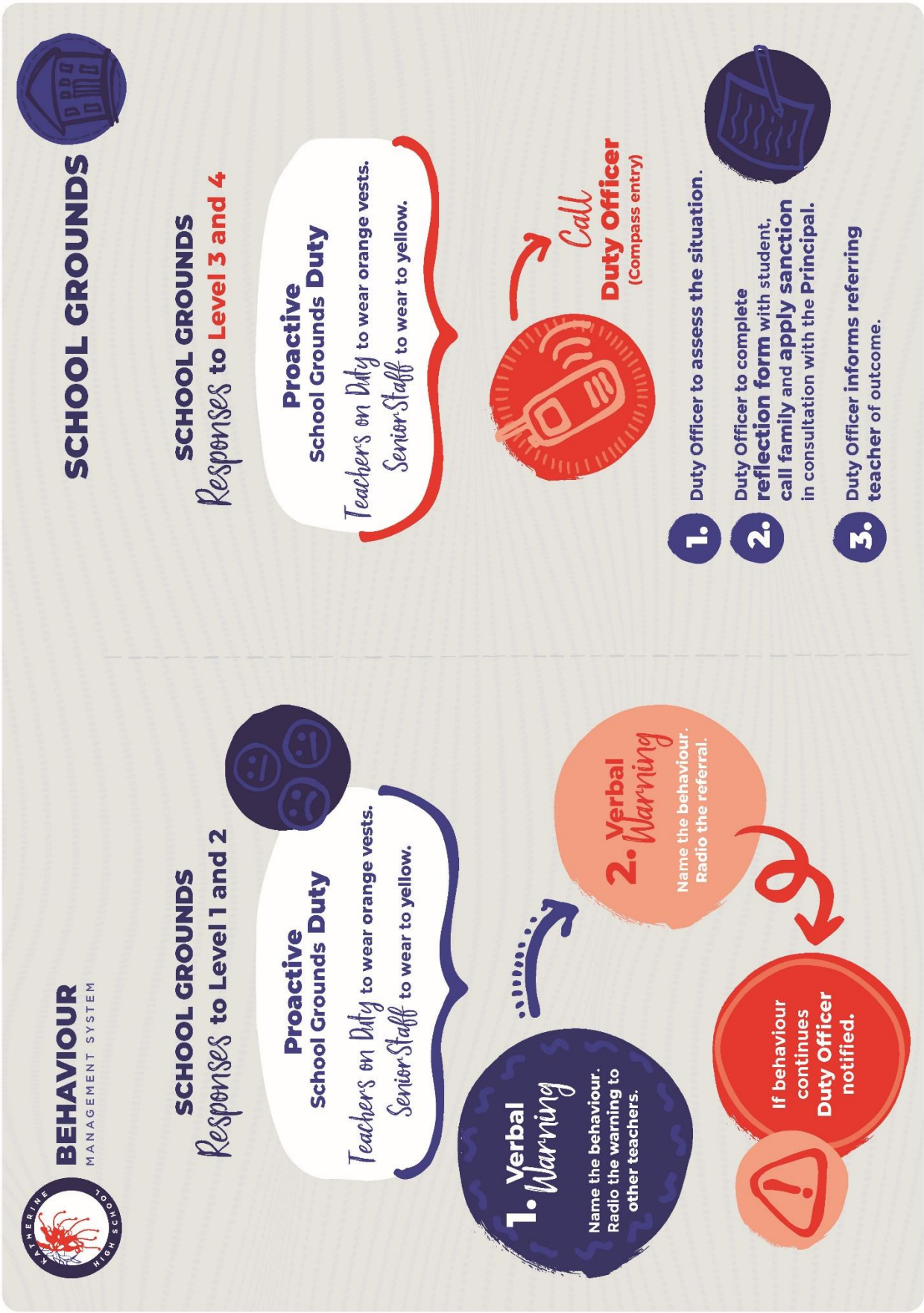


Call
Duty Officer
(Compass entry)

- Duty Officer to remove student from the class.
- Duty Officer to complete reflection form with student, call family and apply sanction in consultation with the Principal.
- Duty Officer informs referring teacher of outcome.







Appendix B

Examples of damage:

- Deep scratches on the globe and on the green ring around it
- Intentional pen marks on the inside of the Pouch
- Bent pins
- Pin and button not fully recessing, due to pin damage
- Cuts to the fabric
- Offensive graffiti including swear words and inappropriate images

